



JUN 09 2014

APPROVED BY COUNCIL

MINUTES APPROVED

6.9.14



BLADES POLICE DEPARTMENT
BLADES, DELAWARE

MEMORANDUM

TO: Mayor Michael Smith
Mayor of Blades

FROM: Chief Edwin C. Cooke *EC*
Chief of Police

THROUGH: Mr. Earl E. Chaffinch Sr.
Police Commissioner

SUBJECT: **Monthly Report June 2014**

DATE: July 14, 2014

June 9th, 2014

Traffic and Criminal Activity Statistics:

Traffic Arrest: (5) Criminal Arrest: (0)

DUI Arrest: (0) Criminal Complaints: (47)

29P Local Fugitive (1) Domestic Related (2)

Vehicle Report

Crown Victoria 2001	Mileage	(133511)	Fuel	(40)
Ford Crown Vic 2009	Mileage	(66662)	Fuel	(11)
Dodge Durango (2005)	Mileage	(152768)	Fuel	(111)
Hummer (1993)	Mileage	(18505)	Fuel	(0)
Hummer (1978)	Mileage	(23500)	Fuel	(0)

Significant Event:

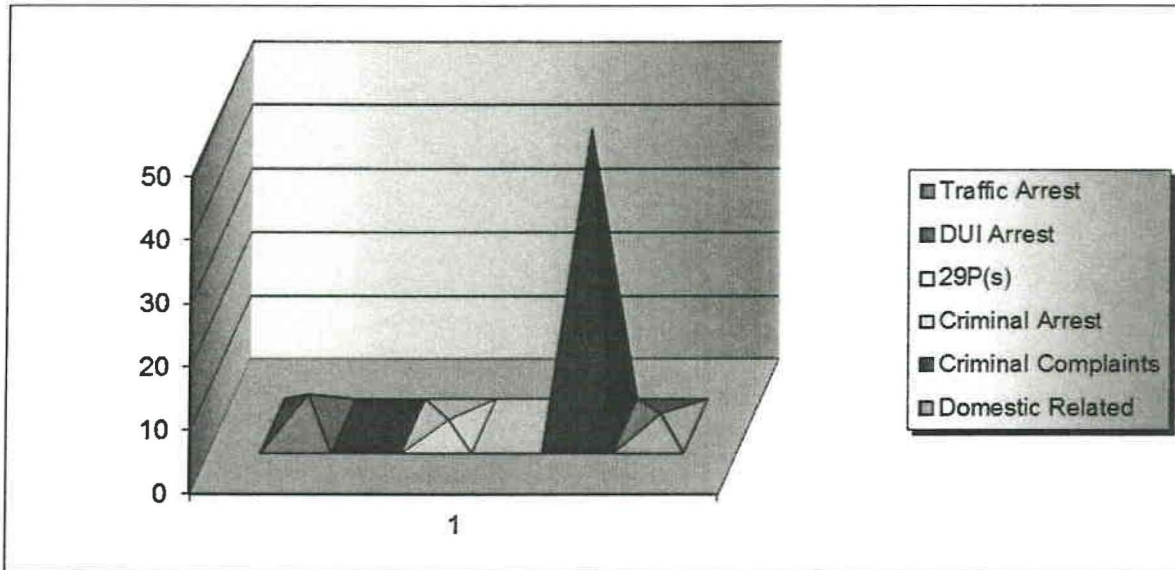
1. On Wednesday - Thursday, April 30 –May 1, 2014, Chief Edwin Cooke attended a two (2) Armorer Certification – SIG SAUER Pistols (Classic) training course held in Harrisburg, PA. Graduates of this course earn a three year certification to preform preventive maintenance on the duty service pistols that the sworn members of Blades PD carry on duty and off duty.
2. On Monday - Wednesday, May 5 – 7, 2014, Chief Edwin Cooke attended a three day Active Shooter Response Instructor course of training held at the SIG SAUER Academy in Epping, NH. This course of training presented the following overview of topics.
 - Mental Preparedness
 - Formulating a plan
 - Entering the “Zone”
 - Search tactics in a high threat environment
 - Communication
 - Threat analysis/ on-scene intelligence
 - Room entry and clearing techniques
 - 2, 3, and 4 person teams
 - Developing a training plan for your 1st responders
 - Ancillary equipment considerations
 - Integrating off duty, plainclothes, 1st responders, and SRT
3. On Monday - Thursday, May 19 – 22, 2014, Chief Edwin Cooke attended the annual DPCC summer conference held at the Atlantic Sands Hotel in Rehoboth Beach, Delaware.
4. Noteworthy Mention – Recruit Officer John Thompson of Blades Police Department is progression forward in the Delaware State Police Academy in all areas of the curriculum. Graduation is scheduled for Friday, July 11, 2014, at the campus of Delaware State University.
5. Moving forward – networking in preparation for our community event to celebrate our ninth National Night Out on Tuesday, August 5, 2014, from 6pm – 8:30pm in Blades Public Park.



JUN 09 2014

**APPROVED
BY COUNCIL**

Traffic Arrests	DUI Arrests	29P(s)	Criminal Arrests	Criminal Complaint	Domestic Related
5	0	1	0	47	2





Town of Blades
OFFICE OF MAYOR & COUNCIL
20 W Fourth Street
Blades, Delaware 19973-4122
(P) 302.629.7366 (F) 302.629.0199

APPROVED
BY COUNCIL
JUN 09 2014

Code Enforcement Report

May 2014

Complaints 4

Ordinance # 416(Abandoned Vehicles) 2

Ordinance # 330 (Trash) 2

Ordinance # 410(Grass) 14

Ordinance # 421 (Noise) 1

Rental Inspections 4

Mileage 6138

Town of Blades

Inspection, Repair & Maintenance Record

Vehicle Identification

MONTH May 14

2013 CHEVY SONIC

Tire Size _____

<u>WEEKLY SCHEDULED MAINTENANCE</u>	<u>WEEK ONE</u>	<u>WEEK TWO</u>	<u>WEEK THREE</u>	<u>WEEK FOUR</u>	<u>WEEK FIVE</u>	<u>CHECK COMPLETED BY INITIALS</u>
CHECK OIL	✓ 5.12.14	✓ 5.19.14	✓ 5.27.14	✓ 6.5.14	✓ 6.12.14	MT
CHECK ANTI-FREEZE	✓	✓	✓	✓	✓	MT
CHECK TIRES	✓	✓	✓	✓	✓	MT
CHECK TIRE PRESSURE	✓	✓	✓	✓	✓	MT
CHECK OTHER FLUIDS	✓	✓	✓	✓	✓	MT
CHECK SIGNAL LIGHTS/BRAKE LIGHTS	✓	✓	✓	✓	✓	MT
MILEAGE	5509	5615	5701	6000	6138	MT

APPROVED
 BY COUNCIL
 JUN 9 9 2014



APPROVED
BY COUNCIL 09/2014

Town of Blades
Water & Maintenance Department

Month/Year: May 2014

Vehicle 1: 2008 GMC Sierra Monthly Total Fuel: \$306.09

Starting Mileage: 48,606 Ending Mileage: 49,456 Total Mileage: 850

Vehicle 2: 1995 Ford F250 Monthly Total Fuel: \$50.00

Starting Mileage: 74,637 Ending Mileage: 74,715 Total Mileage: 78

Vehicle 3: 1995 Chevy D/T Monthly Total Fuel: \$40.00

Starting Mileage: 21,619 Ending Mileage: 21,658 Total Mileage: 39

Maintenance 1: Gas Cans Monthly Total Fuel: \$107.87
Maintenance 2: Backhoe Monthly Total Fuel: 0

Total Hours: 257.6

Complaints: 0 Disconnects: 9 Reconnects: 7

After Hour Calls: 0 After Hour Response: 0

Town Water Leaks: 0 Other Water Leaks: 0

Water Pumped for Month: Well #1: 1,554,100 Gallons Hours: 198.10

Well #2: 1,502,100 Gallons Hours: 140.20

Total: 3,056,200 Gallons Hours: 388.30

Actual meter reading date: 5/29/14


Chemicals Ordered: Caustic Soda: 0 Gallons Chlorine: 120 Gallons

Corrosion Control: 55 Gallons Permanganate: 0 lbs.

Fluoride: 100 lbs.

Snow plowing: N/A Hours Salt spreading: N/A Hours

Comments: _____


Brandon Slater, DE Water Operator #10

DIVISION OF PUBLIC HEALTH
OFFICE OF DRINKING WATER PROGRAM
WATER WORKS REPORT

Supply Name Town of Blades PWSID# 865 Month May Year 2014

Date	Time	Sample Point	Fluoride		Chlorine		Res. - mg/L Treated Water	pH Treated Water	Turbidity Surface Water Only	Other	Remarks
			Ibs. or GPD	mg./l.	Ibs. or GPD						
1	9:55	plant	1853	0.78		0.71	6.6	0.08	Manganese		
2	8:40	plant	1883	0.86		0.68	6.5	0.05	0.65		
3	11:50	plant	1884	0.83		0.87	6.5	0.04	0.05		
4	1:25	plant	1884	1.00		1.17	6.4	0.00	0.05		
5	4:50	plant	1884	0.80		0.64	6.4	0.00	0.05		
6	1:00	plant	1885	0.85		0.77	6.3	0.00	0.05		
7	8:55	plant	1885	1.00		0.70	6.4	0.05	0.05		
8	1:10	plant	1885	1.02		0.95	6.4	0.05	0.05		
9	1:20	plant	1885	0.75		1.02	6.4	0.02	0.05		
10	10:45	plant	1886	0.91		0.97	6.4	0.04	0.05		
11	2:00	plant	1886	0.90		1.04	6.6	0.01	0.05		
12	10:30	plant	1887	0.78		0.94	6.4	0.02	0.05		
13	9:50	plant	1887	0.90		0.94	7.1	0.01	0.05		
14	9:35	plant	1888	0.91		0.93	6.6	0.03	0.05		
15	9:45	plant	1888	0.70		1.01	6.4	0.02	0.05		
16	1:30	plant	1888	0.80		0.94	6.5	0.01	0.05		
17	9:45	plant	1881	0.79		0.84	6.4	0.03	0.05		
18	11:30	plant	1885	0.84		0.98	6.5	0.04	0.05		
19	1:00	plant	1889	0.78		0.99	6.7	0.06	0.05		
20	1:00	plant	1890	0.78		0.99	6.2	0.05	0.00		
21	9:35	plant	1890	0.77		1.05	6.3	0.04	0.01		
22	9:05	plant	1890	0.97		0.95	6.2	0.04	0.00		
23	12:00	plant	1891	0.80		0.81	6.5	0.03	0.05		
24	10:40	plant	1891	0.81		0.92	6.2	0.03	0.02		
25	9:45	plant	1891	1.00		1.26	6.4	0.01	0.01		
26	11:20	plant	1892	0.73		1.08	6.3	0.05	0.00		
27	9:40	plant	1893	0.75		0.97	6.2	0.04	0.00		
28	9:00	plant	1893	0.78		1.02	6.2	0.03	0.00		
29	1:25	plant	1893	1.13		1.20	6.4	0.05	0.02		
30	10:30	plant	1894	0.84		1.08	6.4	0.05	0.01		
31	11:25	plant	1894	0.51		1.11	6.3	0.04	0.00		

Sent to Division of Public Health

Office of Drinking Water
Hue Hen Corporate Center
655 Bay Road, Suite 203
Dover, DE 19901



APPROVED BY COUNCIL 9 2014

Town of Blades
Monthly Well Reading Report

APPROVED
BY COUNCIL JUN 09 2014

Month of May Year 2014

Day	Well #1 GPM	Hours On	Well #2 GPM	Hours On	Backwash Check	Initials
1	2406941	4766.0	2229620	2276.0	✓	SP
2	2401130	4768.3	2229499	2282.0	✓	SP
3	2401718	4775.8	2229876	2286.7	✓	SP
4	2402288	4782.9	2230215	2290.9	✓	SP
5	2402747	4785.8	2230569	2295.3	✓	SP
6	2403300	4795.8	2231092	2301.9	✓	SP
7	2403725	4801.2	2231344	2305.1	✓	SP
8	2404114	4806.1	2232303	2317.2	✓	SP
9	2404114	4806.1	2233152	2327.1	✓	SP
10	2404641	4812.7	2233305	2327.8	✓	SP
11	2405022	4817.6	2234178	2340.7	✓	BS
12	2405510	4823.7	2234564	2345.7	✓	SP
13	2406120	4832.4	2234754	2348.0	✓	SP
14	2406881	4841.0	2235538	2357.9	✓	SP
15	2407160	4844.8	2236086	2364.9	✓	BS
16	2407988	4855.3	2236522	2370.4	✓	SP
17	2408100	4856.8	2236912	2375.3	✓	SP
18	2408731	4864.7	2237341	2380.7	✓	BS
19	2409447	4873.9	2238042	2389.5	✓	BS
20	2410021	4881.9	2238254	2392.2	✓	SP
21	2410627	4888.9	2238755	2398.5	✓	SP
22	2411109	4895.1	2239179	2403.9	✓	SP
23	2411911	4905.4	2239704	2410.6	down	BS
24	2412373	4911.2	2240204	2417.5	down	SP
25	2412715	4915.7	2240737	2424.3	down	BS
26	2413848	4930.5	2241306	2431.0	down	SP
27	2414305	4936.2	2241847	2438.0	down	SP
28	2414944	4944.4	2242366	2444.8	down	SP
29	2415483	4951.4	2243088	2454.1	down	BS
30	2415506	4951.7	2243088	2454.1	works	SP
31	2416482	4964.1	2244041	2466.2	manual down	SP
Total	1,554,100	198.10	1,502,100	190.20		

Total Gallons 3,056,200

Total Hours 388.30

Town OF Blades
 Monthly Effluent Flow Meter Report

JUN 09 2014
APPROVED
BY COUNCIL

Month of May

Year 2014

Day	Effluent Flow Meter	Initials
1	48431339	JP
2	48438682	JP
3	48448541	JP
4	48457813	JP
5	48466287	JP
6	48477317	JP
7	48484021	JP
8	48498145	JP
9	48507336	JP
10	48514200	JP
11	48527193	BS
12	48536290	JP
13	48544652	JP
14	48559828	JP
15	48568706	BS
16	48581582	JP
17	48586939	JP
18	48597997	BS
19	48612540	BS
20	48620532	JP
21	48631862	JP
22	48641336	JP
23	48654983	BS
24	48665384	JP
25	48674229	BS
26	48681605	JP
27	48701490	JP
28	48713644	JP
29	48726886	BS
30	48726974	JP
31	48744846	JP
Total	3,155,070	

Total Gallons 3,155,070