



BLADES POLICE DEPARTMENT  
BLADES, DELAWARE

MEMORANDUM

TO: Mayor Michael Smith  
Mayor of Blades

FROM: Chief Edwin C. Cooke *EC*  
Chief of Police

THROUGH: Mr. Earl E. Chaffinch Sr.  
Police Commissioner

SUBJECT: **Monthly Report December 2013**

DATE: January 13, 2014

**Traffic and Criminal Activity Statistics:**

Traffic Arrest: (38)                      Criminal Arrest: (6)

DUI Arrest: (0)                              Criminal Complaints: (57)

29P Local Fugitive (3)                      Domestic Related (8)

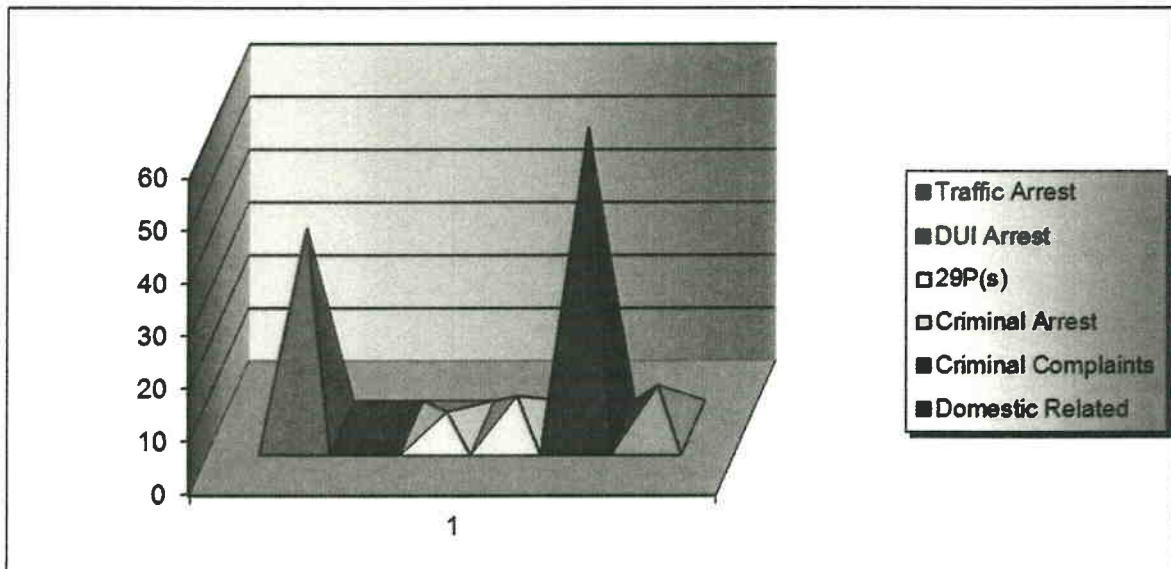
**Vehicle Report**

Crown Victoria 2001	Mileage	(132301)	Fuel	(61)
Ford Crown Vic 2009	Mileage	(65729)	Fuel	(56)
Dodge Durango (2005)	Mileage	(146540)	Fuel	(80)
Hummer (1993)	Mileage	(18505)	Fuel	(0)
Hummer (1978)	Mileage	(23500)	Fuel	(0)

**Significant Event:**

1. On Tuesday, December 10, 2013, Chief Edwin Cooke attended the Delaware Chiefs' Council meeting held at the Dover Downs Hotel in Dover, Delaware. On this same day Commissioner E. Chaffinch and Councilman R. Atkinson attended the Delaware Chiefs' Council Christmas Luncheon held at the Dover Downs Hotel in Dover, Delaware.
2. On Wednesday, December 18, 2013, Chief Edwin Cooke attended the Sussex County Police Chiefs' Association meeting held at the Bay Leaf Restaurant in Milton, Delaware.
3. On Monday, 120913, the sworn members of Blades Police Department completed the third annual firearms re-certification shoot at the DSP Firearms Facility in Smyrna, Delaware.

Traffic Arrests	DUI Arrests	29P(s)	Criminal Arrests	Criminal Complaint	Domestic Related
<b>38</b>	<b>0</b>	<b>3</b>	<b>6</b>	<b>57</b>	<b>8</b>





Town of Blades  
OFFICE OF MAYOR & COUNCIL  
20 W Fourth Street  
Blades, Delaware 19973-4122  
(P) 302.629.7366 (F) 302.629.0199

## **Code Enforcement Report**

**December 2013**

**Ordinance # 330 (trash) 2**

**Complaints 3**

**Rental Inspections Left 57 (9 completed this month)**

**Mileage 3438**



Town of Blades  
Water & Maintenance Department

Month/Year: Dec 2013

Vehicle 1: 2008 GMC Sierra Monthly Total Fuel: \$335.70

Starting Mileage: 43,997 Ending Mileage: 44,928 Total Mileage: 931

Vehicle 2: 1995 Ford F250 Monthly Total Fuel: \$70.00

Starting Mileage: 73,948 Ending Mileage: 74,003 Total Mileage: 55

Vehicle 3: 1995 Chevy D/T Monthly Total Fuel: 0

Starting Mileage: 21,408 Ending Mileage: 21,393 Total Mileage: 15

Maintenance 1: Gas Cans Monthly Total Fuel: \$47.19

Maintenance 2: Backhoe Monthly Total Fuel: 0 Total Hours: 206.2

Complaints: 0 Disconnects: 0 Reconnects: 0

After Hour Calls: 0 After Hour Response: 0

Town Water Leaks: 1 Other Water Leaks: 0

Water Pumped for Month: Well #1: 1,617,000 Gallons Hours: 212.70

Well #2: 1,426,900 Gallons Hours: 178.40

Total: 3,043,900 Gallons Hours: 391.10

Actual meter reading date: Dec 30, 2013

Chemicals Ordered: Caustic Soda: 330 Gallons Chlorine: 120 Gallons

Corrosion Control: 0 Gallons Permanganate: 0 lbs.

Fluoride: 0 lbs.

Snow plowing: N/A Hours Salt spreading: N/A Hours

Comments: \_\_\_\_\_

Brandon Slater, DE Water Operator #10

**Town of Blades**  
**Monthly Well Reading Report**

Month of December Year 2013

Day	Well #1 GPM	Hours On	Well #2 GPM	Hours On	Backwash Check	Initials
1	2322799	3755.4	2163301	1456.9	✓	BS
2	2323342	3742.5	2163722	1462.3	✓	JJ
3	2323999	3779.4	2164141	1474.1	✓	JJ
4	2324633	3779.4	2164661	1474.1	✓	JJ
5	2325271	3787.7	2164949	1477.7	✓	JJ
6	2325996	3797.0	2165280	1481.8	✓	JJ
7	2326483	3803.4	2165826	1488.8	✓	JJ
8	2326757	3807.0	2166336	1495.0	✓	BS
9	2327216	3813.2	2166808	1500.9	✓	JJ
10	2327902	3822.4	2167021	1504.3	✓	JJ
11	2328428	3829.3	2167427	1508.8	✓	JJ
12	2328896	3835.7	2167952	1515.4	✓	JJ
13	2329434	3842.9	2168565	1523.2	✓	JJ
14	2330054	3851.8	2169109	1530.1	✓	JJ
15	2330600	3852.8	2169642	1536.9	✓	BS
16	2330909	3852.8	2170156	1543.4	✓	JJ
17	2331477	3876.7	2170793	1551.3	✓	JJ
18	2331945	3876.7	2171206	1556.5	✓	JJ
19	2332281	3871.0	2171851	1554.5	✓	JJ
20	2332686	3886.3	2172374	1571.0	✓	BS
21	2333367	3895.2	2172968	1575.8	✓	JJ
22	2334107	3904.8	2173255	1581.9	✓	BS
23	2334826	3914.0	2173367	1582.7	✓	JJ
24	2335302	3920.3	2174086	1592.1	✓	JJ
25	2335826	3927.2	2174735	1600.2	✓	JJ
26	2336246	3932.6	2175239	1606.4	✓	BS
27	2336726	3939.8	2175671	1611.8	✓	BS
28	2337520	3949.3	2175947	1615.2	✓	JJ
29	2337959	3955.0	2176538	1622.5	✓	BS
30	2338617	3936.6	2177029	1628.6	✓	BS
31	2338566	3948.1	2177578	1635.3	✓	JJ
Total	7,612,000	212.70	1,426,400	178.40		

Total Gallons 3,043,900

Total Hours 391.10



DIVISION OF PUBLIC HEALTH  
OFFICE OF DRINKING WATER PROGRAM  
WATER WORKS REPORT

Supply Name Town of Blados PWSID# 865 Month December Year 2013

Date	Time	Sample Point	Fluoride lbs. or GPD	mg./l.	Chlorine lbs. or GPD	Res. - mg/L Treated Water	pH Treated Water	Turbidity Surface Water Only	Other	Remarks
1	8:30	plant	1825	0.79		1.05	6.9	0.04	Mang	BS
2	8:45	plant	1825	1.05		0.79	6.3	0.01		AO
3	9:25	plant	1820	1.00		0.91	6.8	0.01		AO
4	9:15	plant	1826	0.81		1.11	6.6	0.03		AO
5	9:55	plant	1827	1.14		1.05	6.4	0.05		AO
6	10:30	plant	1827	1.18		1.09	7.1	0.03		AO
7	11:00	plant	1827	0.86		1.06	6.8	0.02		AO
8	11:30	plant	1828	0.90		1.07	6.4	0.05		AO
9	9:30	plant	1828	0.84		0.94	6.9	0.04		AO
10	9:15	plant	1828	0.51		0.99	6.5	0.03		AO
11	8:35	plant	1822	1.10		0.86	6.4	0.03		AO
12	9:25	plant	1820	1.01		0.83	6.5	0.07		AO
13	9:05	plant	1830	1.11		0.87	6.4	0.08		AO
14	12:30	plant	1831	1.02		0.86	6.5	0.01		AO
15	9:30	plant	1831	1.08		0.86	6.8	0.02		AO
16	9:55	plant	1832	0.84		0.78	6.3	0.04		BS
17	1:25	plant	1832	0.78		0.80	6.3	0.03		AO
18	10:10	plant	1832	0.78		0.69	6.2	0.03		AO
19	9:50	plant	1833	0.99		0.60	6.2	0.03		AO
20	10:00	plant	1933	1.03		0.90	6.3	0.10		BS
21	11:55	plant	1834	1.06		1.07	6.3	0.08		AO
22	10:00	plant	1834	1.09		1.11	6.4	0.09		BS
23	9:00	plant	1834	1.18		1.16	6.3	0.05		AO
24	9:50	plant	1835	1.17		1.14	6.7	0.01		AO
25	12:00	plant	1839	1.08		1.21	6.6	0.02		AO
26	11:00	plant	1836	1.00		1.10	6.5	0.04		BS
27	10:00	plant	1836	1.11		1.37	7.0	0.05		BS
28	11:30	plant	1838	1.06		1.22	6.7	0.03		BS
29	12:00	plant	1838	1.01		1.26	6.5	0.05		BS
30	12:00	plant	1837	1.04		1.14	6.9	0.04		BS
31	11:00	plant	1838	1.11		1.23	6.4	0.03		BS

Division of Public Health  
Office of Drinking Water  
Blue Hen Corporate Center  
655 Bay Road, Suite 203  
Dover, DE 19901

  
Signature

Date

Town OF Blades  
Monthly Effluent Flow Meter Report

Month of December

Year 2013

Day	Effluent Flow Meter	Initials
		<del>BS</del>
1	46942716	BS
2	46952573	JS
3	46963525	JS
4	46575383	JS
5	46584889	JS
6	46995794	JS
7	47006728	JS
8	47014641	BS
9	47024598	JS
10	47034477	JS
11	47045877	JS
12	47054688	JS
13	47066104	JS
14	47078572	JS
15	47084902	<del>JS</del>
16	47098235	JS
17	47110537	JS
18	47119818	JS
19	47150110	JS
20	47139078	BS
21	47151006	JS
22	4763752	BS
23	47171802	JS
24	47184513	JS
25	47196818	JS
26	47205340	BS
27	47216162	BS
28	47227158	JS
29	47237826	BS
30	47249846	BS
31	47259251	JS
Total	3,165,350	

Total Gallons 3,165,350

January 13, 2014

Parks and Cemetery Report.

The following items that we will be working on at the Park are:

Installation of New Merry-Go-Round

Repair and Reinstallation of Blades Park Sign.

Purchase and installation of some type of lighting around monument and Flags.

Sending letters out to various businesses and organizations requesting donations for park equipment, This will be used to help secure matching funds from the State.

Cemetery:

I was contacted and met with the family regarding the location of grave markers for their family plot, they could only find two on one side of their plot.

Respectfully submitted

A handwritten signature in cursive script, appearing to read "David L. Ruff".

David L. Ruff,  
Parks and Cemetery Commissioner



**MAYOR'S REPORT**

**JANUARY 2014**

**ATTENDED THE SCAT MEETING IN MILLSBORO**

**ATTENDED THE SCAT STEERING COMMITTEE MEETING IN GEORGETOWN**